



GUERNSEY CLIFFLINE



Supported by



digimap

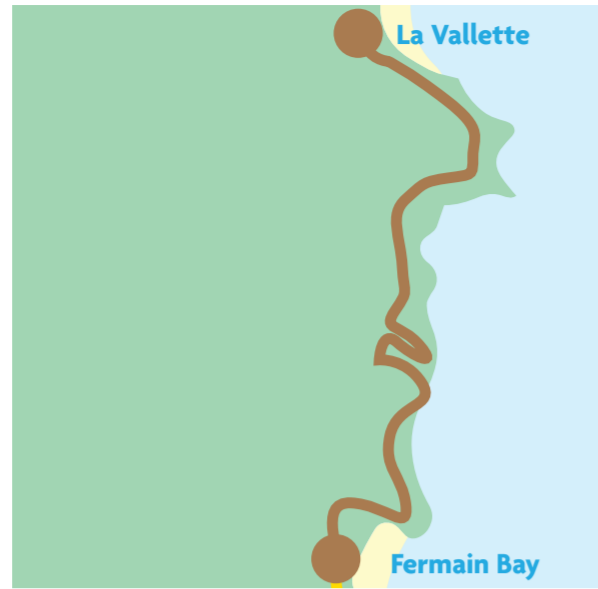
ISLANDS of GUERNSEY



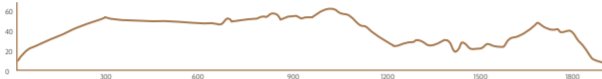
healthimprovement.gg



La Vallette to Fermain Bay



Elevation:



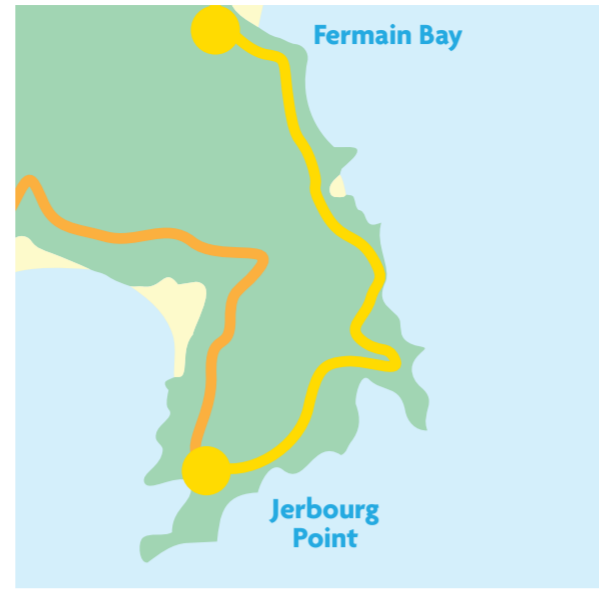
Distance 1.9km: A scenic coastal walk from La Vallette Bathing Pools. The main cliff path to Fermain Bay starts with a steep climb up Clarence steps to Clarence Battery, with great views over St Peter Port and Herm and Sark from the top. The path winds along through the tranquil Bluebell Woods – a perfect blend of sea views and woodland charm.

Points of Interest: La Vallette Bathing Pools, Clarence Battery, Bluebell Woods.

Access: Car and bike parking at La Vallette Bathing Pools. Access via bus is a short, flat walk from the main Town terminus to the start of the steps. Closest stop to Fermain is the Fermain Tavern, a 600m steep walk up or down Fermain Lane.

Cafes & Toilets: La Vallette Bathing Pools Cafe, Fermain Beach Cafe.

Fermain Bay to Jerbourg Point



Elevation:



Distance 2.2km: Leaving the wooded calm of Fermain behind, the path climbs steadily along rugged cliffs towards the headland at Jerbourg, offering sweeping sea views and glimpses of hidden coves along the way, including Marble Bay. There is a steep climb of steps up to Jerbourg car park at the end.

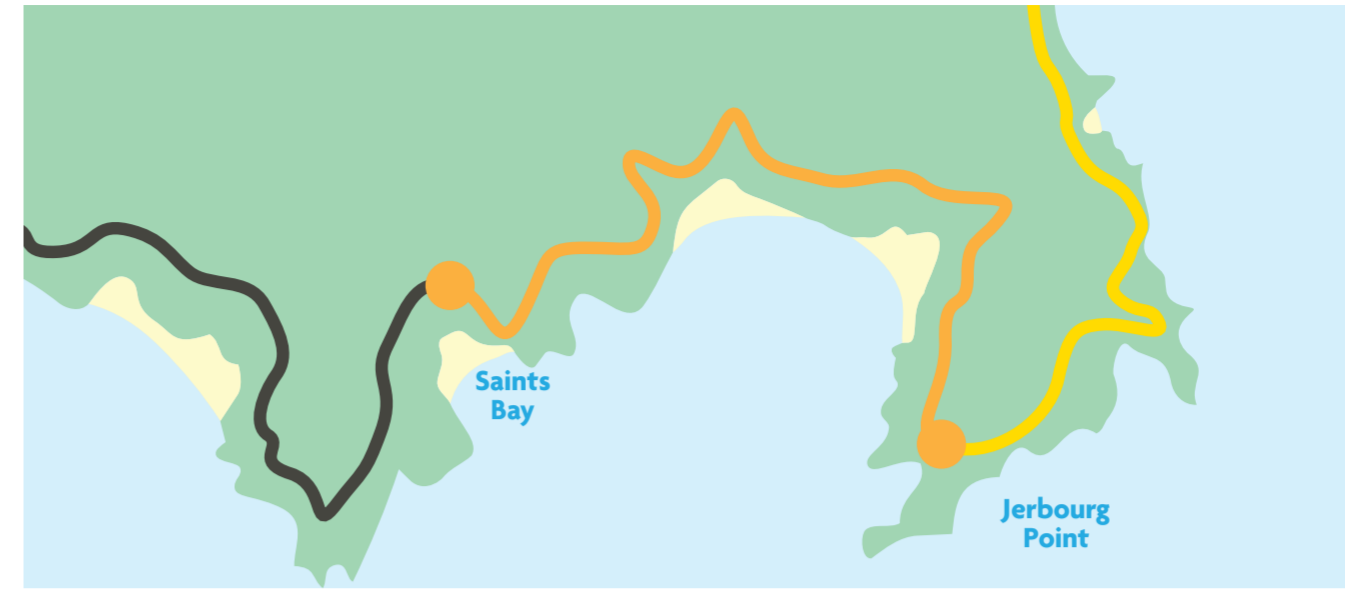
Points of Interest: Marble Bay, Jerbourg Point

Access: Car and bike parking at Jerbourg. Bus stop at Jerbourg Hotel. Closest stop to Fermain is the Fermain Tavern, a 600m steep walk up or down Fermain Lane.

Cafes & Toilets: Fermain Beach Cafe, Jerbourg Kiosk, Jerbourg Hotel.



Jerbourg Point to Saints Bay



Elevation:



Distance 4.9km: The trail winds through pockets of greenery, gently transitioning from the exposed headland at Jerbourg to the sheltered charm of Saints Bay. There are many beautiful viewing points along the way. The path passes above Petit Port, which is accessed by a steep set of steps, and continues towards the famous views of Moulin Huet, where Renoir painted some of his most celebrated coastal scenes.



Cafes & Toilets: Jerbourg Kiosk, Jerbourg Hotel, Renoir Tea Garden (Moulin Huet), Saints Bay Kiosk.

Points of interest: The Pea Stacks, Petit Port (only accessed down 270 steep steps), Renoir Walk at Moulin Huet, Saints Bay fisherman's landing

Access: Car and bike parking at Jerbourg. Bus stop at Jerbourg Hotel. For Saints Bay, there is minimal parking along Fisherman's landing and access via a narrow road. For buses from Saints Bay, the closest routes are via St Martins Village.



The Health Improvement Commission is a local charity that supports healthier living across Guernsey and Alderney. Our aim is to help make the islands places where everyone can live well.

One way we do this is by encouraging people to be active. Guernsey's natural environment is one of its greatest assets, and the cliff paths offer a great way to enjoy the outdoors while moving in ways that suit your ability, interests and leisure time.

This map is here to help you choose walks that are right for you. It includes information on distance, hills, nearby facilities and points of interest, so you know what to expect before you set off. We hope this helps you feel confident and inspired to explore the cliffs.

Being active is good for both physical and mental health. Small amounts all add up, and walking is a simple, enjoyable way to move more. The cliff paths offer a fantastic opportunity to get active while discovering Guernsey's beautiful coastline.

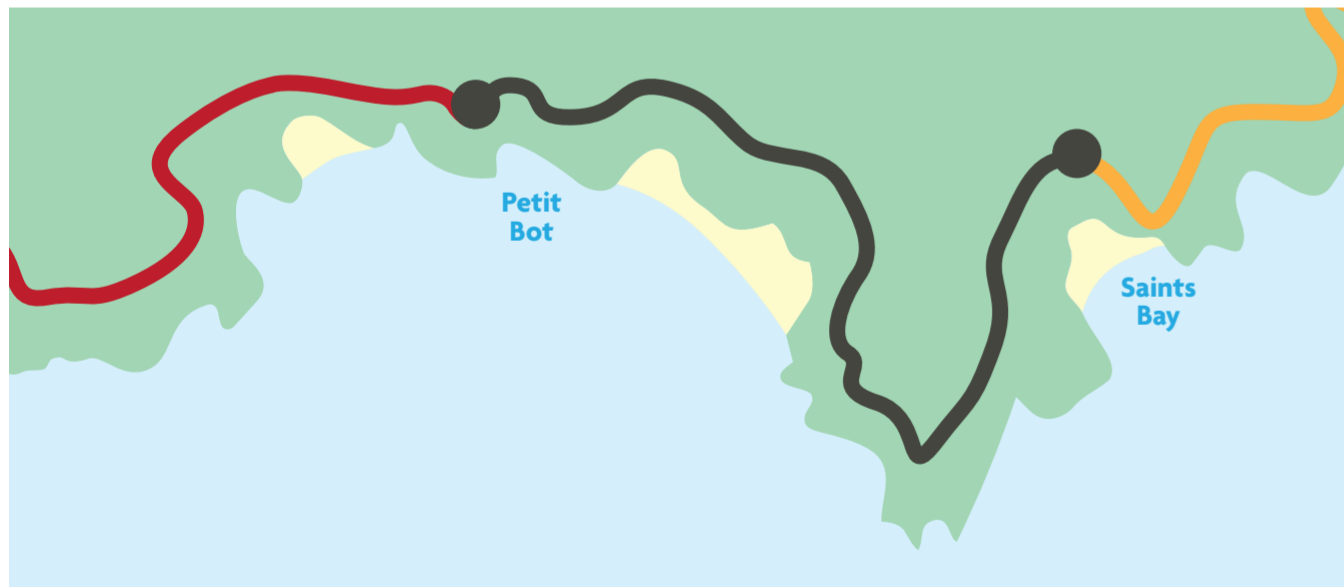
Find detailed walks and elevations online at healthimprovement.gg or scan the QR Code below:



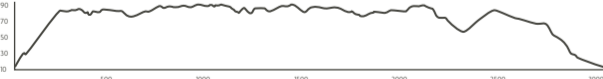
If needing to report something about the waymarker posts (e.g. damage), please contact hello@healthimprovement.gg

Risk Statement: Please note that these walks may involve uneven surfaces, slippery conditions, and steep inclines. Participation is entirely at your own risk. We recommend wearing appropriate footwear and taking care, especially in wet or windy weather. We accept no responsibility for any injuries, accidents, or losses incurred while following these routes.

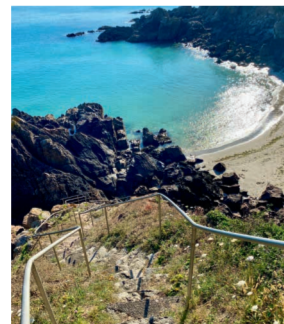
Saints Bay to Petit Bot



Elevation:



Distance 3km: This scenic stretch begins by following the path above Saints Bay harbour towards Icart Point, with dramatic views along the south coast sea and cliffs and passing high above the hidden Le Jaonnet Bay. The route descends into the sheltered cove of Petit Bot, where woodland meets the beach.



Cafes & Toilets: Saints Bay Kiosk, Petit Bot Tea Room, Icart toilets

Points of interest: Icart point, Le Jaonnet Bay

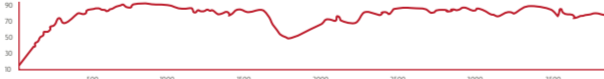
Access: For Saints Bay, there is minimal parking along Fisherman's landing and access is via a narrow road. For Petit Bot, there is some parking at the bottom of the valley by the cafe and toilets and nearby at certain points along the road. For buses from Saints Bay, the closest routes are via St Martins Village. For Petit Bot, the closest stop is on Forest Road.



Petit Bot to La Corbiere



Elevation:



Distance 3.9km: Leaving the sheltered valley of Petit Bot, the path rises steeply onto one of the most dramatic stretches of Guernsey's south coast. The cliffs here are high and rugged, offering sweeping views over open water and the rocky outcrops below. Le Gouffre is an area of outstanding natural beauty and just past the café is a circular National Trust walk.



Cafes & Toilets: Petit Bot Tea Room, Le Gouffre Cafe

Points of interest: Le Gouffre National Trust walks, La Corbiere headland



La Corbiere to Portelet



Elevation:



Distance 8km: From the exposed headland at La Corbiere, the path continues to undulate along rugged cliff tops with expansive views, striking coastal rock formations and a number of bunkers and observation towers. From Pleinmont Headland there are various routes that drop down to Portelet Bay and harbour below.



Cafes & Toilets: Portelet Beach Kiosk

Points of interest: La Prévôté Tower, Pleinmont Headland with WW2 German Naval observation tower, Fairy Ring, small fishing harbour at Portelet Bay

Access: For Corbiere there is a car park or the nearest bus stop is about a 10-15 minute walk from the main road. There is car parking at Portlet and a bus stop.

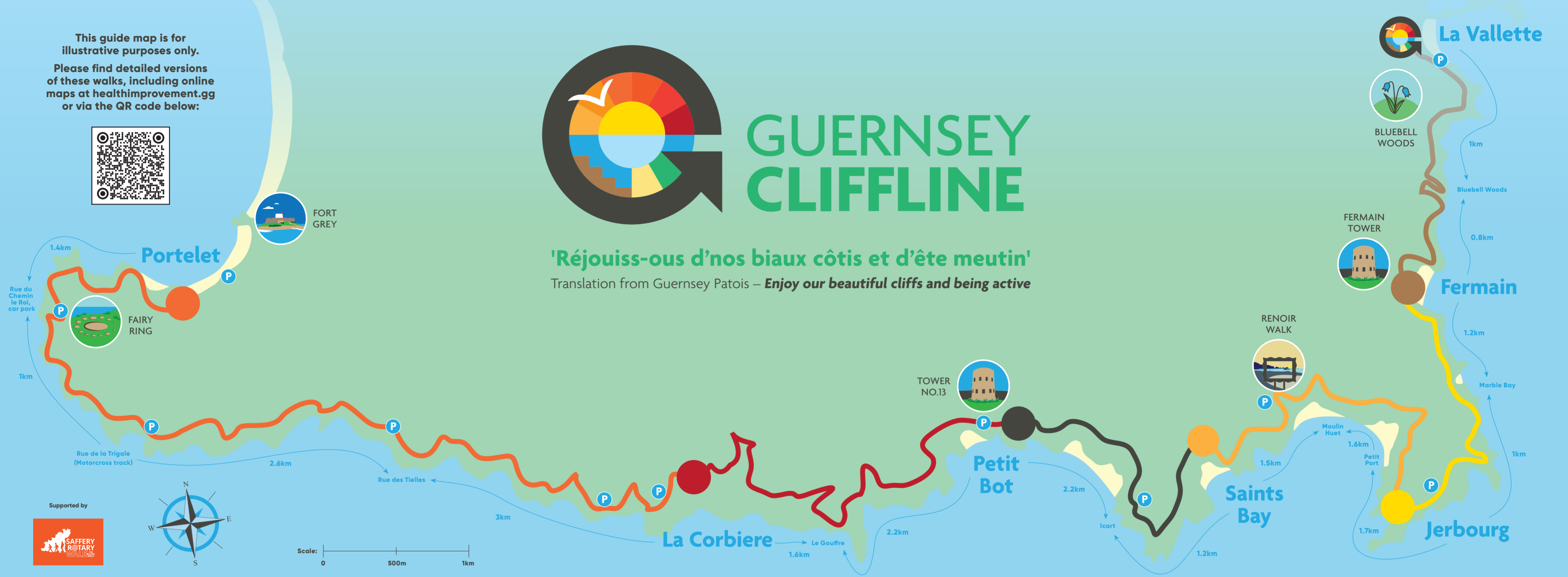


This guide map is for illustrative purposes only. Please find detailed versions of these walks, including online maps at healthimprovement.gg or via the QR code below:



GUERNSEY CLIFFLINE

'Réjouiss-ous d'nos biaux côtis et d'ête meutin'
Translation from Guernsey Patois – *Enjoy our beautiful cliffs and being active*



For bus information visit buses.gg and for more information about ease of access to bays and sea swimming visit the Visit Guernsey app. Images courtesy of @GorgeousGuernsey.

healthimprovement.gg